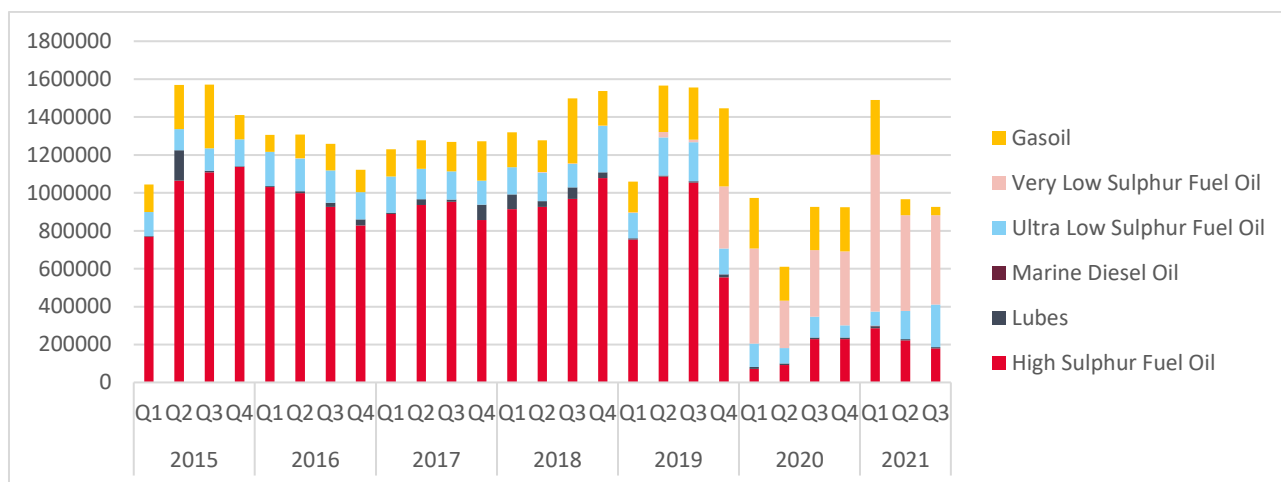


Conventional fuel bunkering in the Port of Antwerp (in tonnes)*

Year	Lubes	Gasoil	Marine Diesel Oil	Ultra Low Sulphur Fuel Oil	Very Low Sulphur Fuel Oil	High Sulphur Fuel Oil	Total
2015	172.233	842.009		499.128		4.081.147	5.594.517
Q1	2.039	144.833		127.659		769.620	1.044.151
Q2	159.428	232.924		111.260		1.065.080	1.568.692
Q3	7.826	335.426		117.982		1.109.237	1.570.471
Q4	2.940	128.826		142.227		1.137.210	1.411.203
2016	67.146	473.518		669.755	1.740	3.783.086	4.995.245
Q1	4.696	89.456		181.740		1.030.504	1.306.396
Q2	9.046	125.939		172.571	1.740	999.009	1.308.305
Q3	20.938	140.425		171.746		926.283	1.259.392
Q4	32.466	117.698		143.698		827.290	1.121.152
2017	128.865	656.995		627.286		3.634.981	5.048.127
Q1	6.518	142.726		191.451		888.588	1.229.283
Q2	30.030	150.009		160.892		936.341	1.277.272
Q3	12.070	156.041		148.268		953.045	1.269.424
Q4	80.247	208.219		126.675		857.007	1.272.148
2018	200.339	875.667		660.298	9.578	3.886.996	5.632.878
Q1	78.831	183.679		143.082		913.542	1.319.134
Q2	29.379	167.519		150.502	3.773	926.683	1.277.856
Q3	61.171	343.274		122.054	3.705	968.677	1.498.881
Q4	30.958	181.195		244.660	2.100	1.078.094	1.537.007
2019	33.100	1.095.703	500	676.473	371.719	3.449.883	5.627.378
Q1	7.395	161.826		132.293	3.399	753.792	1.058.705
Q2	5.671	245.324		201.037	28.130	1.086.425	1.566.587
Q3	5.793	276.406	180	205.705	13.550	1.054.691	1.556.325
Q4	14.241	412.147	320	137.438	326.640	554.975	1.445.761
2020	34.293	907.662		378.399	1.493.764	620.719	3.434.837
Q1	10.157	266.363		122.617	502.337	71.681	973.155
Q2	7.137	180.041		82.118	249.480	92.288	611.064
Q3	7.996	229.415		110.252	350.632	228.598	926.893
Q4	9.003	231.843		63.412	391.315	228.152	923.725
2021	21.800	417.322	4.103	447.101	1.803.929	688.898	3.383.153
Q1	9.113	287.678	4.103	73.384	828.906	286.671	1.489.855
Q2	6.641	84.704		148.834	504.822	221.908	966.909
Q3	6.046	44.940		224.883	470.201	180.319	926.389
Grand total	657.776	5.268.875	4.603	3.958.440	3.680.730	20.145.710	33.716.135

Evolution fuel bunkering in the Port of Antwerp (in tonnes)



LNG bunkering in the Port of Antwerp (in tonnes)

Year	LNG (in tonnes)
2013	68
2014	138
2015	167
2016	490
2017	743
2018	746
2019	1.022
2020	2.286
2021 9m	1.520

*Though Port of Antwerp strives to produce correct, up to date and complete information, Port of Antwerp can not guarantee the accuracy of the data quality. Port of Antwerp is therefore not liable for any omission or inaccuracy that might occur in the bunker figures.